

# GROUND STRAP INSTALLATION

# GLYDUS

A Ground Strap is provided in the Outboard Cylinder Steering system to protect against corrosion caused by Stray Current.

## GROUND STRAP INSTALLATION:

Install the Ground Strap to the Cylinder and Steering Bracket as shown in the reference image.

## THE GROUND STRAP HAS THREE TERMINALS:

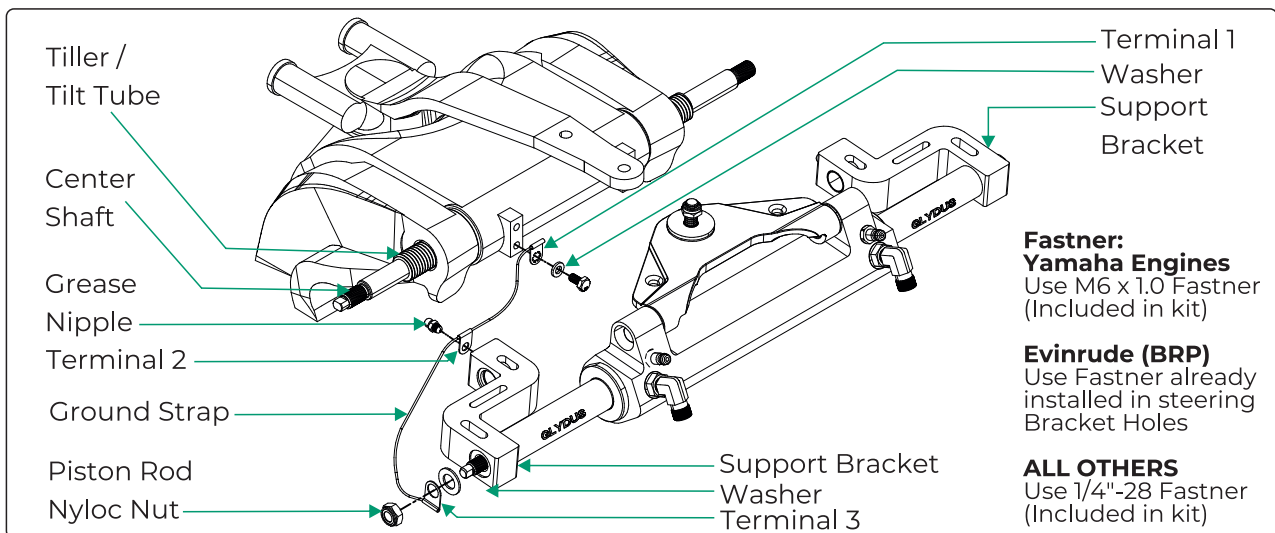
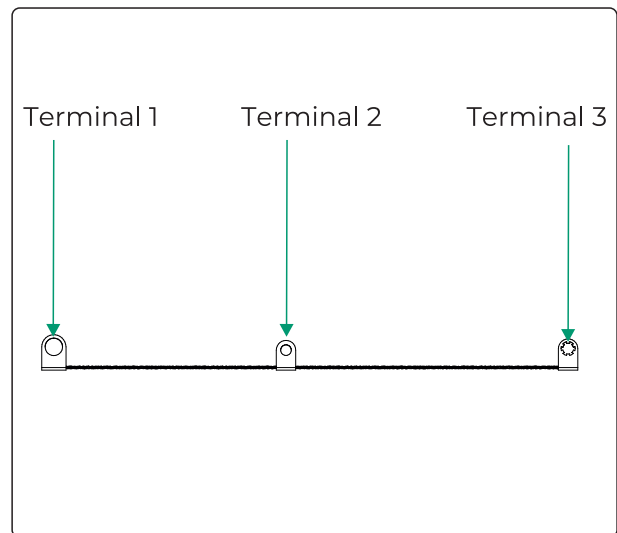
- Terminal 1
- Terminal 2
- Terminal 3

## FOLLOW THE STEPS BELOW IN SEQUENCE.

### STEP-BY-STEP INSTALLATION :

#### STEP 1

- Install **Terminal 1** to the Steering Bracket Hole as shown in image.
- Secure the Terminal using the appropriate Washer and Fastener as specified by the Engine manufacturer.



#### STEP 2

- Ensure the Ground Strap is routed under the Tiller/Tilt Tube to avoid Twisting, Pinching, or Bending.



## STEP 3

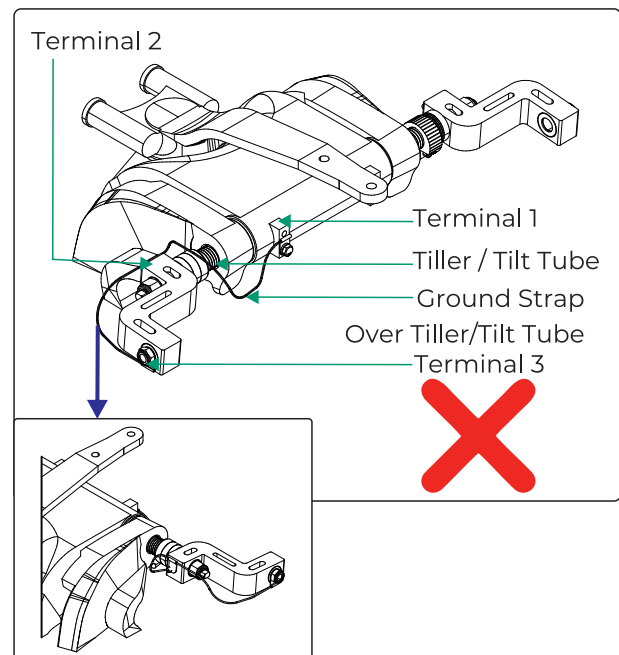
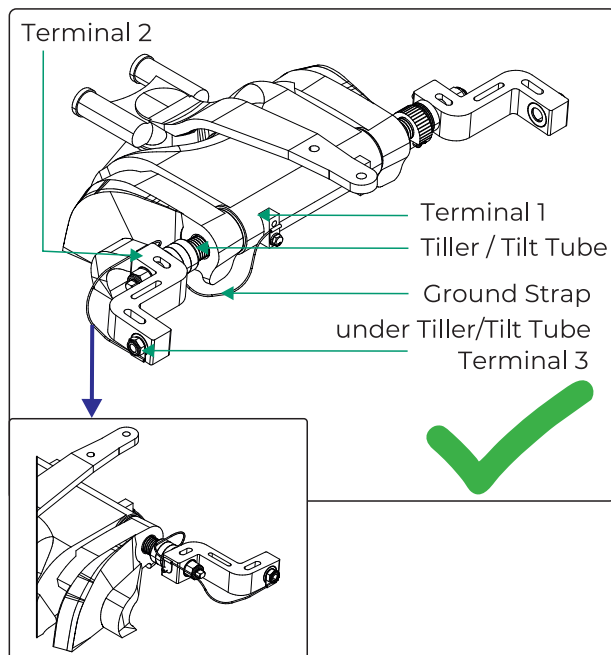
- Unscrew the Grease Nipple from the Support Bracket.
- Attach **Terminal 2** to the Support Bracket.
- Secure it by reinstalling and tightening the Grease Nipple, as shown in the reference image.

## STEP 4

- Unscrew the Piston Rod Nyloc Nut and Washer.
- Install the Washer first.
- Attach **Terminal 3** to the Piston Rod
- Reinstall and tighten the Piston Rod Nyloc Nut to a torque of **45 Nm (33 ft-lb / 390 in-lb)**.

## IMPORTANT NOTES:

- The Ground Strap must be installed on the Engine **before** the Cylinder is attached to the Engine Tiller Arm.
- Provide sufficient slack in the Ground Strap to allow free Engine pivoting in all positions across the entire Steering range.
- The Ground Strap **must not be under tension**.



## ⚠ CAUTION

During the installation phases use only stainless steel tools to avoid the corrosion of the metal parts.

