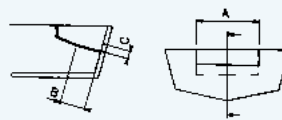




UC128-OBF
FRONT
MOUNT
CYLINDER

SPECIFICATIONS	UC128-OBF/1 -/2 -/3
Volume	120 cc - 7.3 cu. in
Output force	450 kg - 992 lbs
Inside diameter	35 mm - 1.37"
Stroke	185 mm - 7.28"
3/8" (9,5 mm) Fittings	For high pressure flex hose
Bleed fittings	DN5 Quick connect

SPLASHWELL DIMENSION REQUIREMENTS			
Engine No.	A	B	C
1	560 mm - 22.05"	152 mm - 5.98"	152 mm - 5.98"
2	1110 mm - 43.70"	152 mm - 5.98"	152 mm - 5.98"



For twin engine applications minimum engine center distance is 21.6" (550 mm)

42

UC128-OBF
CYLINDER
APPLICATIONS

ENGINE	MODEL	YEAR	CYLINDER	P. NO.	PACKAGED
Mercury® Mariner®	75-90-115-125 Optimax 2 Stroke	2004-to date	UC128-OBF/3	39967 T	PROTECH 3
	135-150-175 Optimax 2 Stroke	1999-to date	UC128-OBF/1	39423 Z	PROTECH 1
	200-225-250 Optimax 2 Stroke	1999-to date	UC128-OBF/1	39423 Z	PROTECH 1
	RACING 300 Optimax 2 Stroke		UC128-OBF/1	39423 Z	PROTECH 1
	100-115 EFI 4 Stroke	2007-to date	UC128-OBF/1	39423 Z	PROTECH 1
	115-125-150 EFI 2 Stroke	1990-2007	UC128-OBF/1	39423 Z	PROTECH 1
	225-250 EFI 2 Stroke	2000-2007	UC128-OBF/1	39423 Z	PROTECH 1
	250 Saltwater EFI 4 Stroke	2004-2006	UC128-OBF/1	39423 Z	PROTECH 1
135-150-175-200 Verado L4 4 Stroke		UC128-OBF/1	39423 Z	PROTECH 1	
Evinrude®	E75-E90 2 Stroke	2004-to date	UC128-OBF/2	39966 R	PROTECH 2
	E115-E130-E135 2 Stroke V4	1995-to date	UC128-OBF/2	39966 R	PROTECH 2
	E150-E175-E200 2 Stroke V6	1995-to date	UC128-OBF/2	39966 R	PROTECH 2
	E200 HO- E225-E250 2 Stroke V6	1995-to date	UC128-OBF/2	39966 R	PROTECH 2
	E250 HO- E300 2 Stroke V6		UC128-OBF/2	39966 R	PROTECH 2
Yamaha®	75C-90 2 Stroke	1998-2008	UC128-OBF/2	39966 R	PROTECH 2
	115C-130B 2 Stroke	1990-2008	UC128-OBF/2	39966 R	PROTECH 2
	150F-200F-250G 2 Stroke	1996-2007	UC128-OBF/2	39966 R	PROTECH 2
	150 HPDI VMAX 2 Stroke	2000-2008	UC128-OBF/2	39966 R	PROTECH 2
	175-200-225-250-300 HPDI VMAX 2 St.	2000-2008	UC128-OBF/2	39966 R	PROTECH 2
	F70 4 Stroke	2010-to date	UC128P-OBF/1	40106U	-
	F90-F100-F115-F150 EFI 4 Stroke	1999-2007	UC128-OBF/1	39423 Z	PROTECH 1
	F200-F225-F250 4 Stroke	2002-2007	UC128-OBF/2	39966 R	PROTECH 2
	F115-F150	2004-to date	UC128-OBF/1	39423 Z	PROTECH 1
	F200-F225-F250-F300 4 Stroke	2006-to date	UC128-OBF/2	39966 R	PROTECH 2
F350 4 Stroke	2008-to date	see UC128-SVS	SilverSteer	-	
Honda®	BF75-90 4 Stroke	1995-to date	UC128-OBF/1	39423 Z	PROTECH 1
	BF115D	1998-2009	UC128-OBF/3	39967 T	PROTECH 3
	BF115A	2009-to date	UC128-OBF/1	39423 Z	PROTECH 1
	BF130A	1998-2005	UC128-OBF/3	39967 T	PROTECH 3
	BF135-150 4 Stroke	2005-to date	UC128-OBF/1	39423 Z	PROTECH 1
	BF90-BF150 V-TEC 4 Stroke	2008-to date	UC128-OBF/1	39423 Z	PROTECH 1
BF175-200-225 4 Stroke	2001-to date	UC128-OBF/1	39423 Z	PROTECH 1	
Suzuki®	DF70-80-90 4 Stroke	1998-to date	UC128-OBF/2	39966 R	PROTECH 2
	DF100-115-140 4 Stroke*	1998-2008	UC128-OBF/1*	39423 Z	PROTECH 1
	DF100-115-140 4 Stroke new model	2008-to date	UC128-OBF/1	39423 Z	PROTECH 1
	DF150-175 4 Stroke	2006-to date	UC128-OBF/1	39423 Z	PROTECH 1
	DF200-DF225-DF250-DF300		UC128-OBF/2	39966 R	PROTECH 2
Tohatsu®	115-120-140 2 Stroke	2004-to date	UC128-OBF/2	39966 R	PROTECH 2
	70-90-115 TLDI 4 Stroke	2004-to date	UC128-OBF/1	39423 Z	PROTECH 1
Selva®	80 Portofino/Tigershark 2 Stroke	1995-to date	UC128-OBF/1	39423 Z	PROTECH 1
	150 White Shark 2 Stroke				
	100EFI Marlin -115 EFI Narwhal-150EFI Killer Whale 4 Stroke	2001-2007 2000-to date	UC128-OBF/2 UC128-OBF/1	39966 R 39423 Z	PROTECH 2 PROTECH 1
Johnson®	BJ90-115-140 4 Stroke	2001-2007	UC128-OBF/1	39423 Z	PROTECH 1
	J90-115 V4 2 Stroke	1995-2007	UC128-OBF/2	39966 R	PROTECH 2
	J150-175 V6 2 Stroke	1995-2007	UC128-OBF/2	39966 R	PROTECH 2
	J200-225 V6 4 Stroke	2004-2007	UC128-OBF/2	39966 R	PROTECH 2

***NOTE:**
Suzuki® engines built from 1998 to 2008 installing UC128-OBF/1 cylinder require optional **KIT SU - 41954W**.
For higher horsepower applications, high performance SilverSteer™ cylinder is recommended.